



Orlando Orthopaedic Center



FIXING LUMBAR SPINES USING MICROSCOPES AND TUBES

G GRADY MCBRIDE, MD
ORLANDO ORTHOPAEDIC SPINAL CENTER
ORLANDO, FL



Traditional “Open” Back Surgery

- ◆ Involves large “open” incisions
 - ◆ Higher blood loss and infections
 - ◆ Longer Recovery
 - ◆ Higher complications !!
-

Traditional “Open” Surgery



“Open” Back Surgery



Traditional Back Surgery



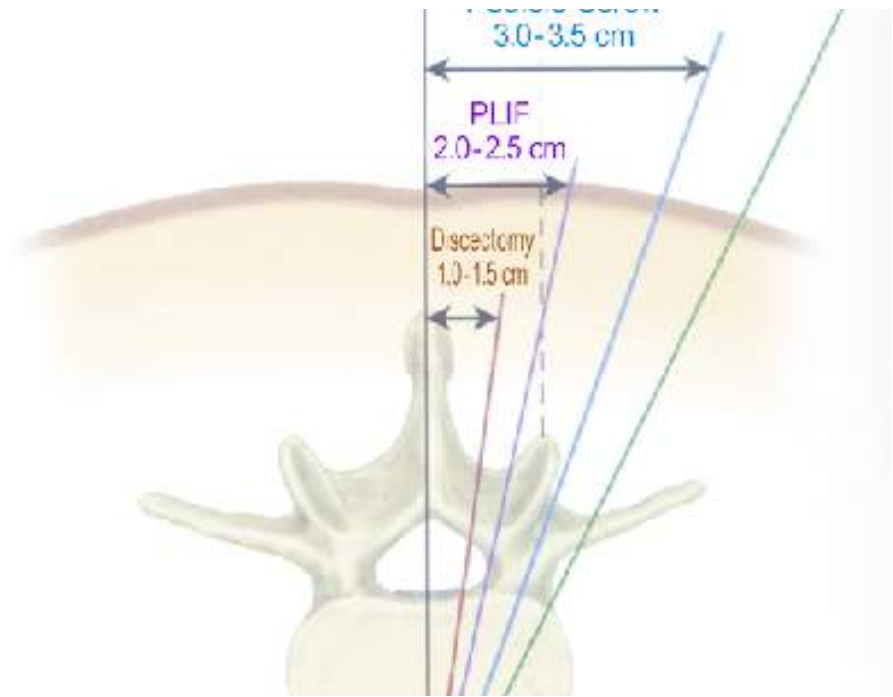
Minimal Invasive Surgery (MIS) ADVANTAGES

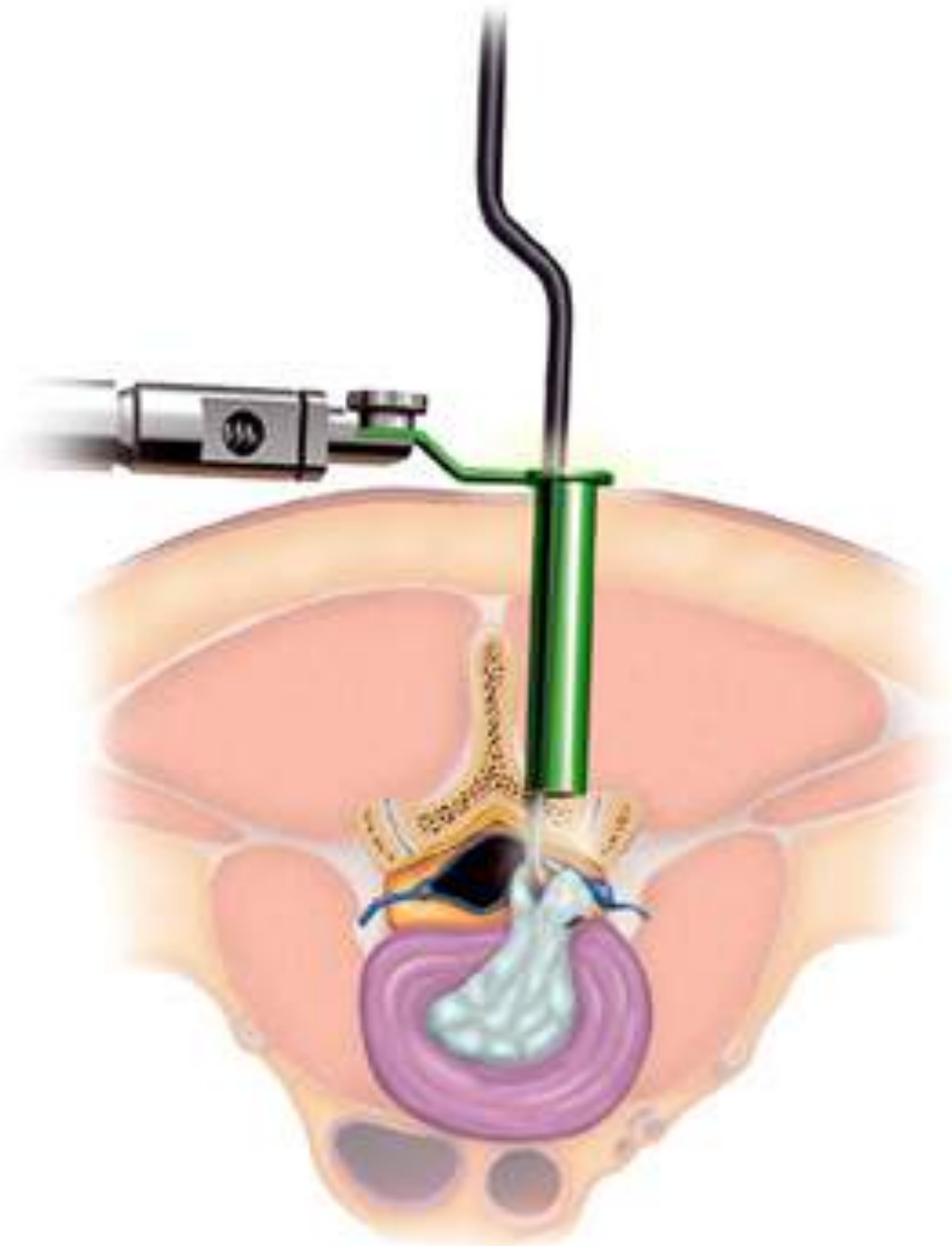
- ✔ LESS PAIN AND BLEEDING
 - ✔ SMALLER INCISIONS
 - ✔ FASTER RECOVERY WITH FEWER COMPLICATIONS
-

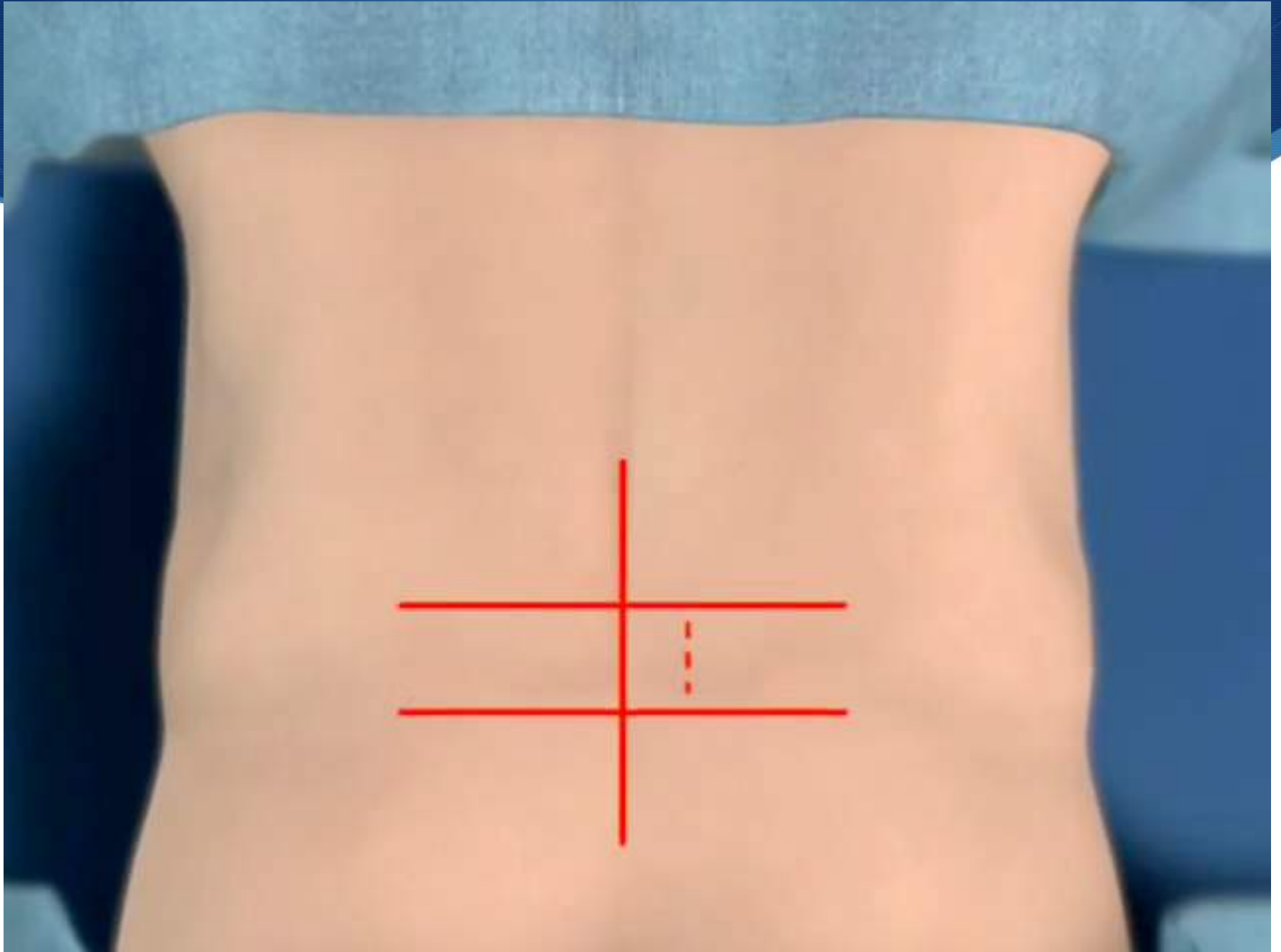
Tubular Endoscopic Discectomy

- 1. Very Small incisions usually < 25mm
 - 2. Muscle tissue sparing
 - 3. Usually outpatient surgery
 - 4. More rapid recovery
-



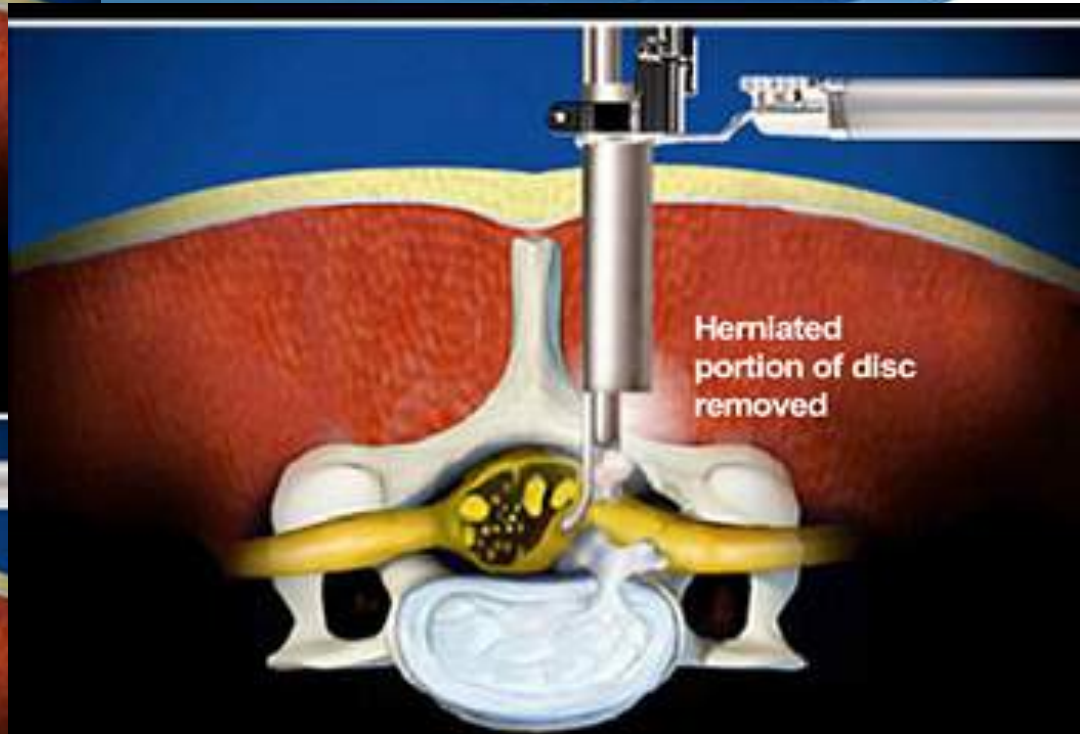
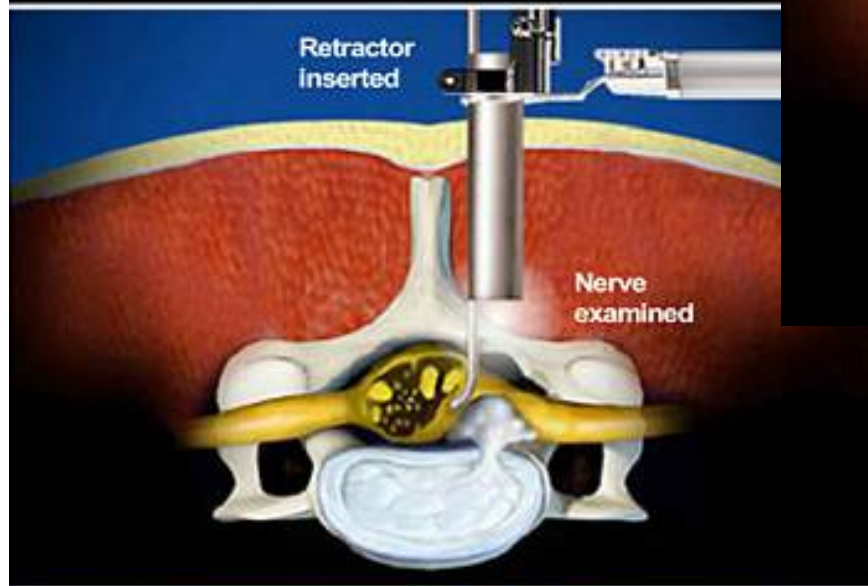
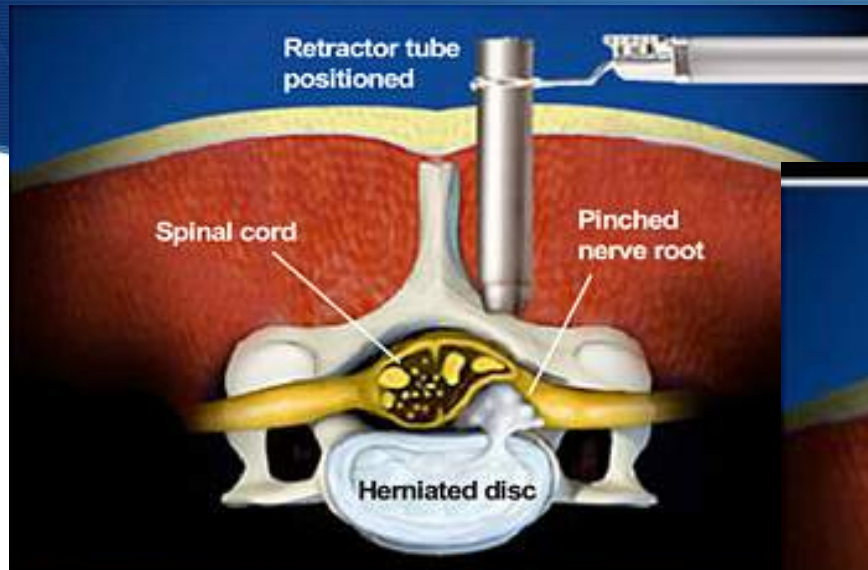


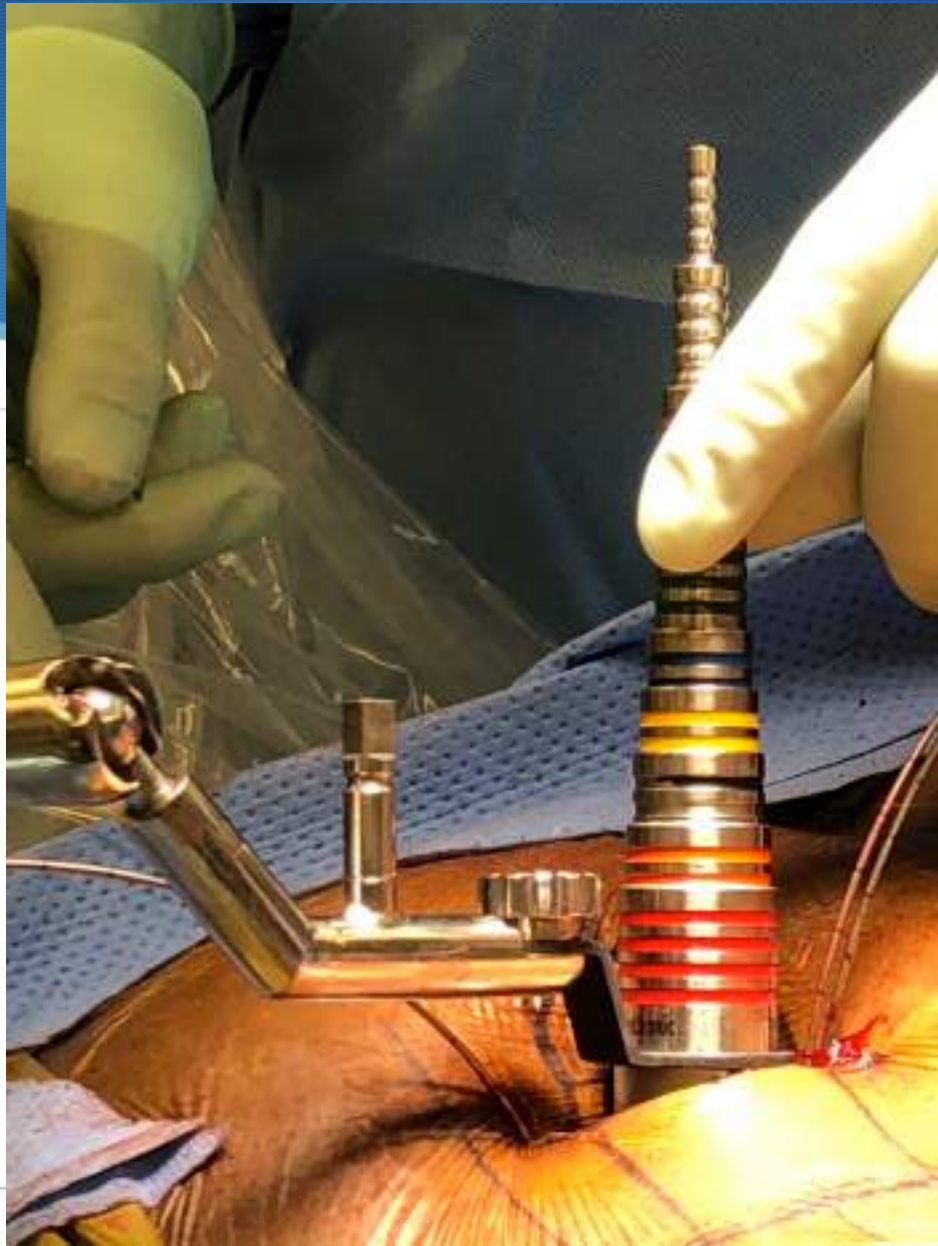




Insertion of Access Tube

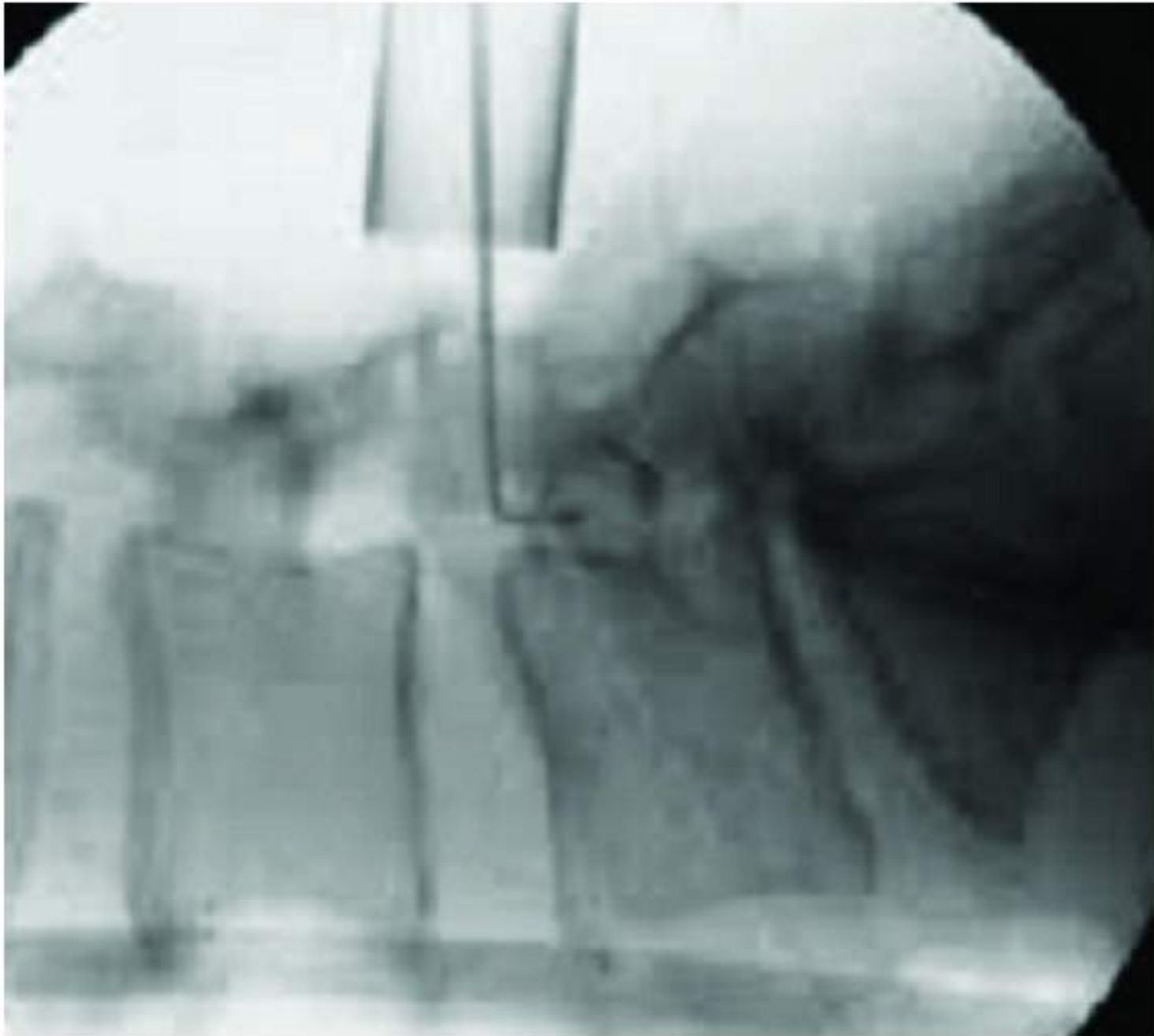


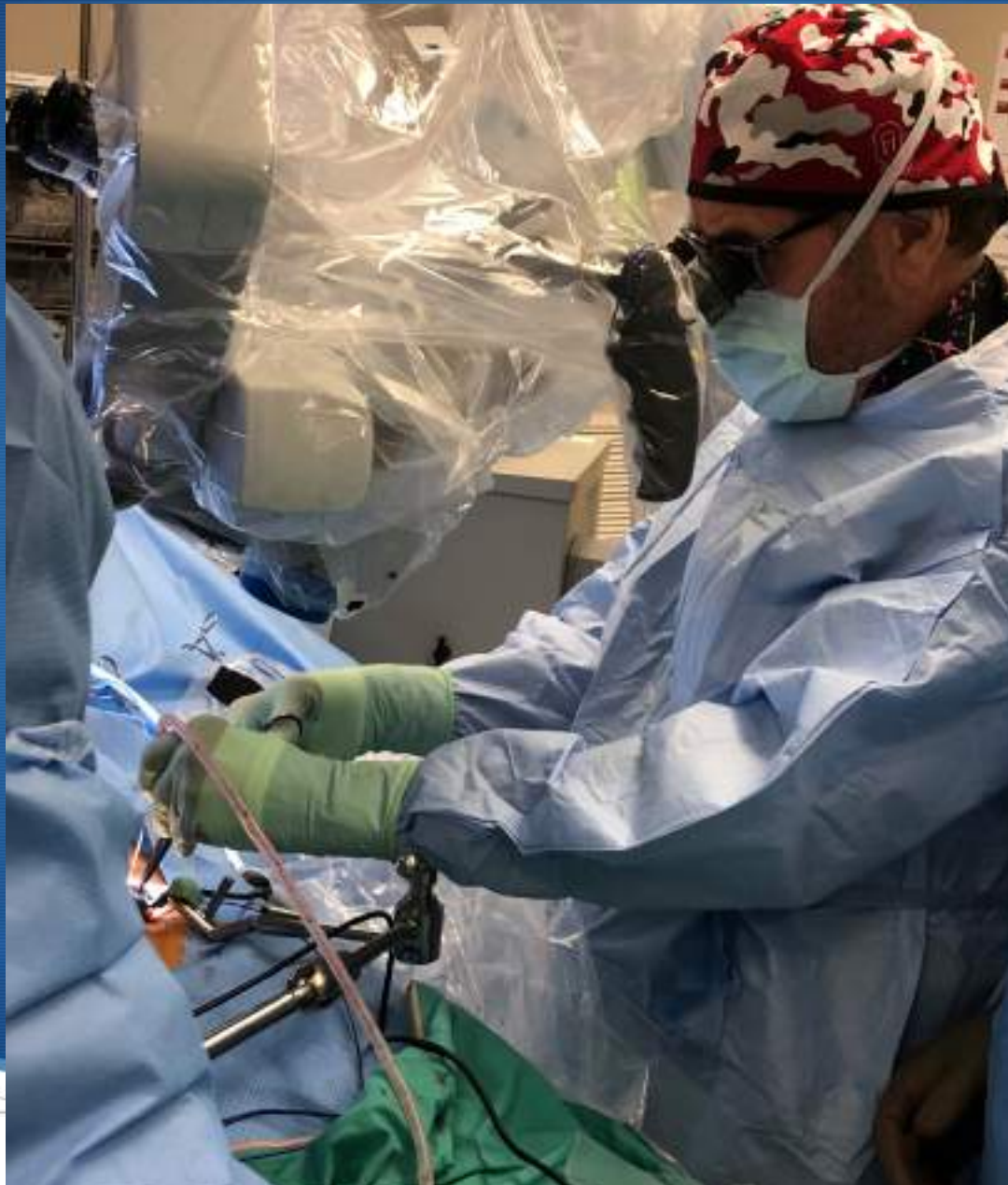


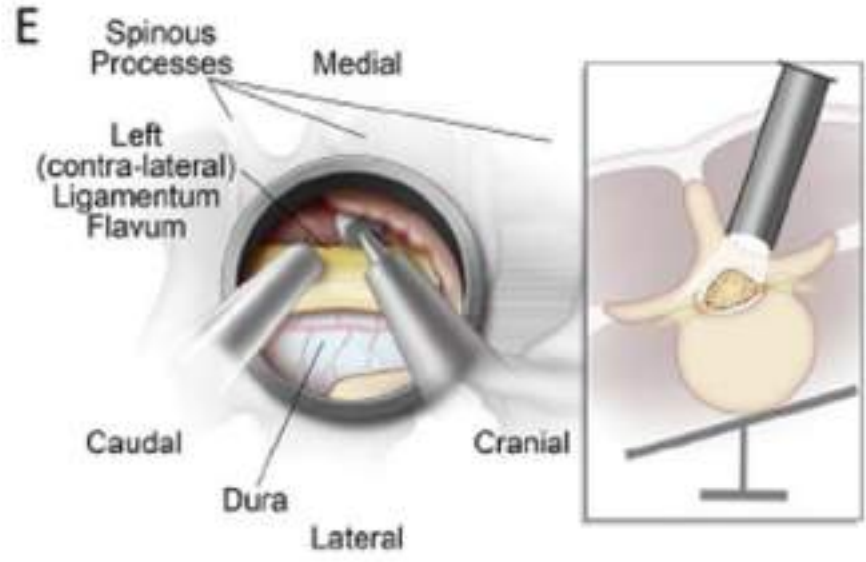
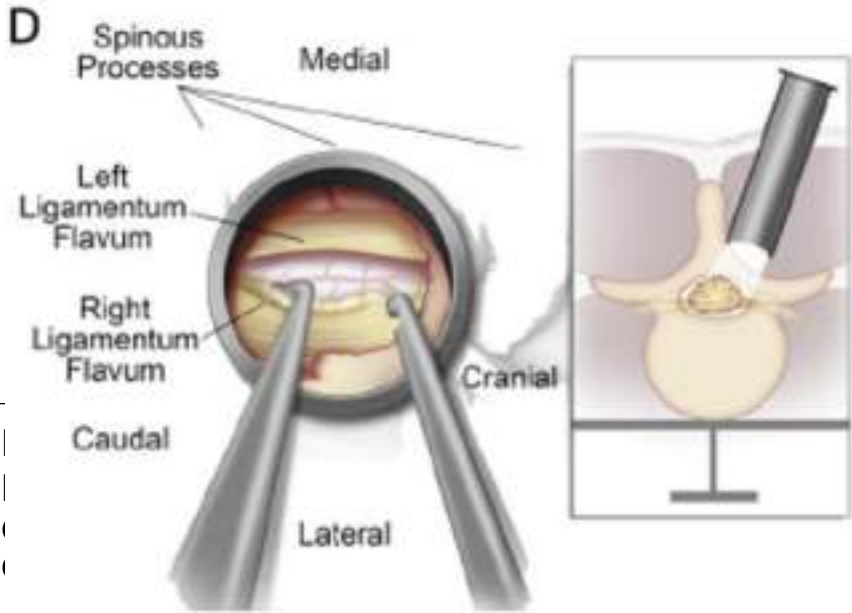
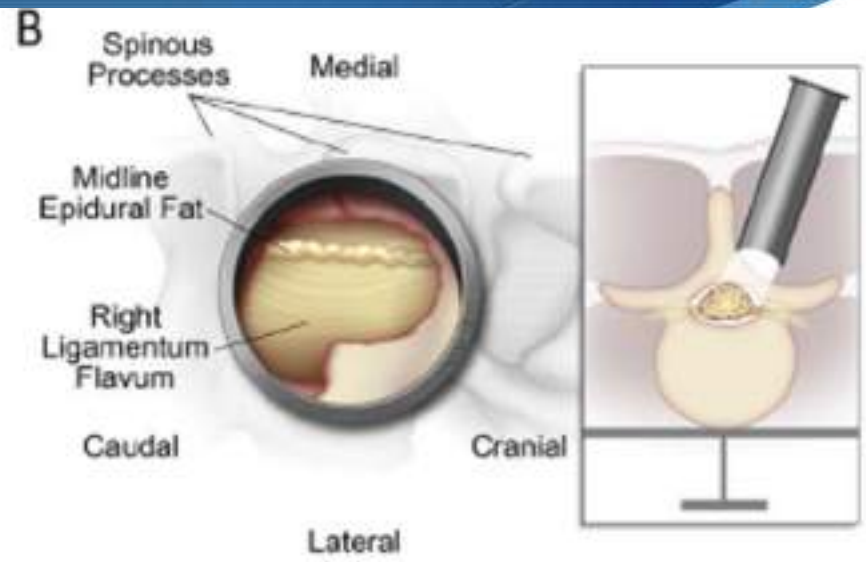
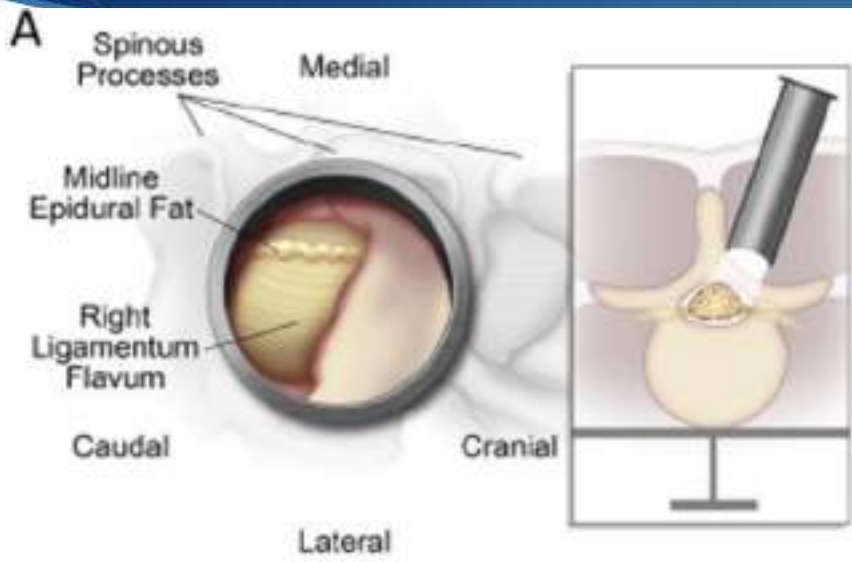


Tubular Retractor









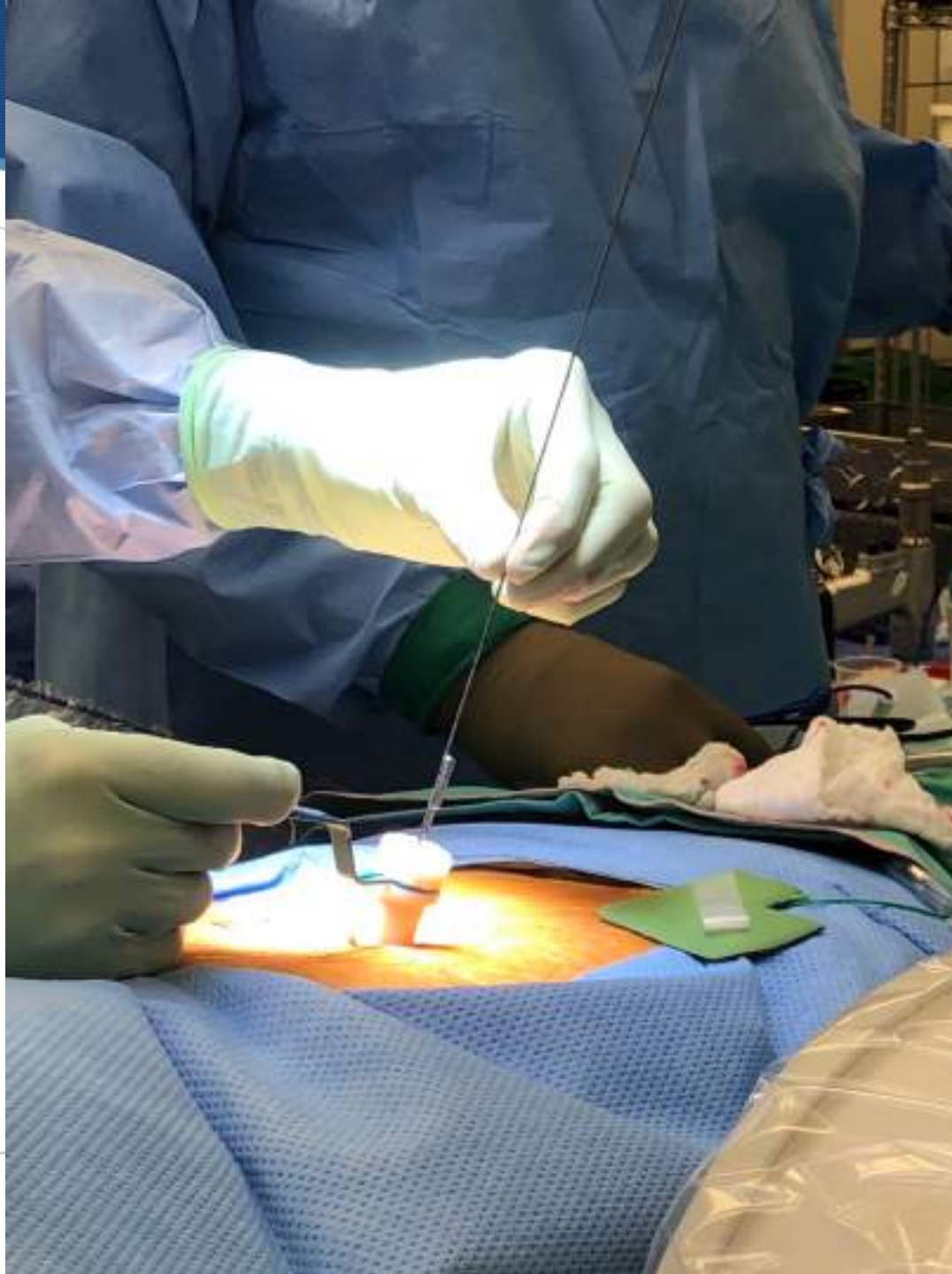


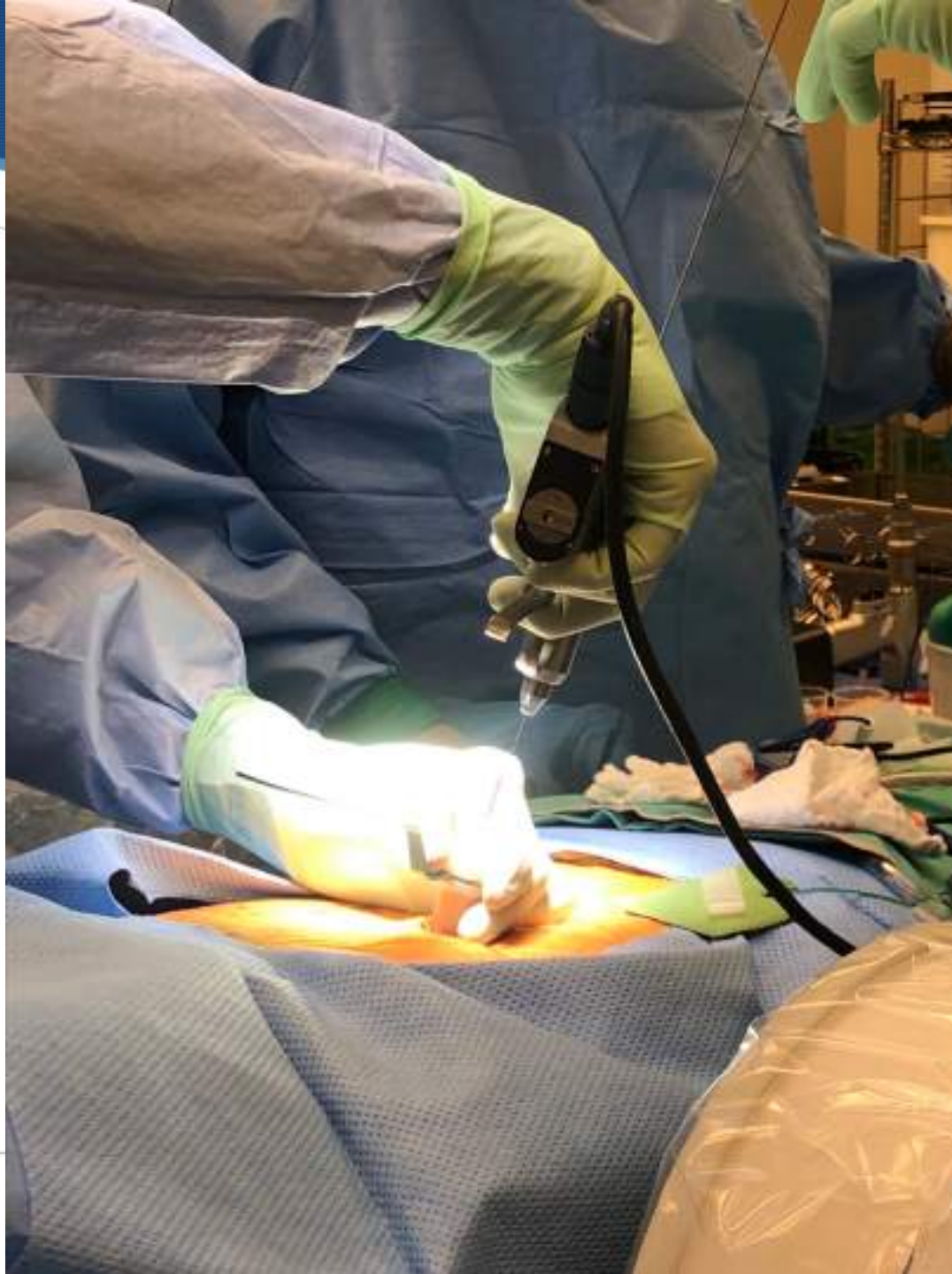
MIS Spinal Decompression and Fusion

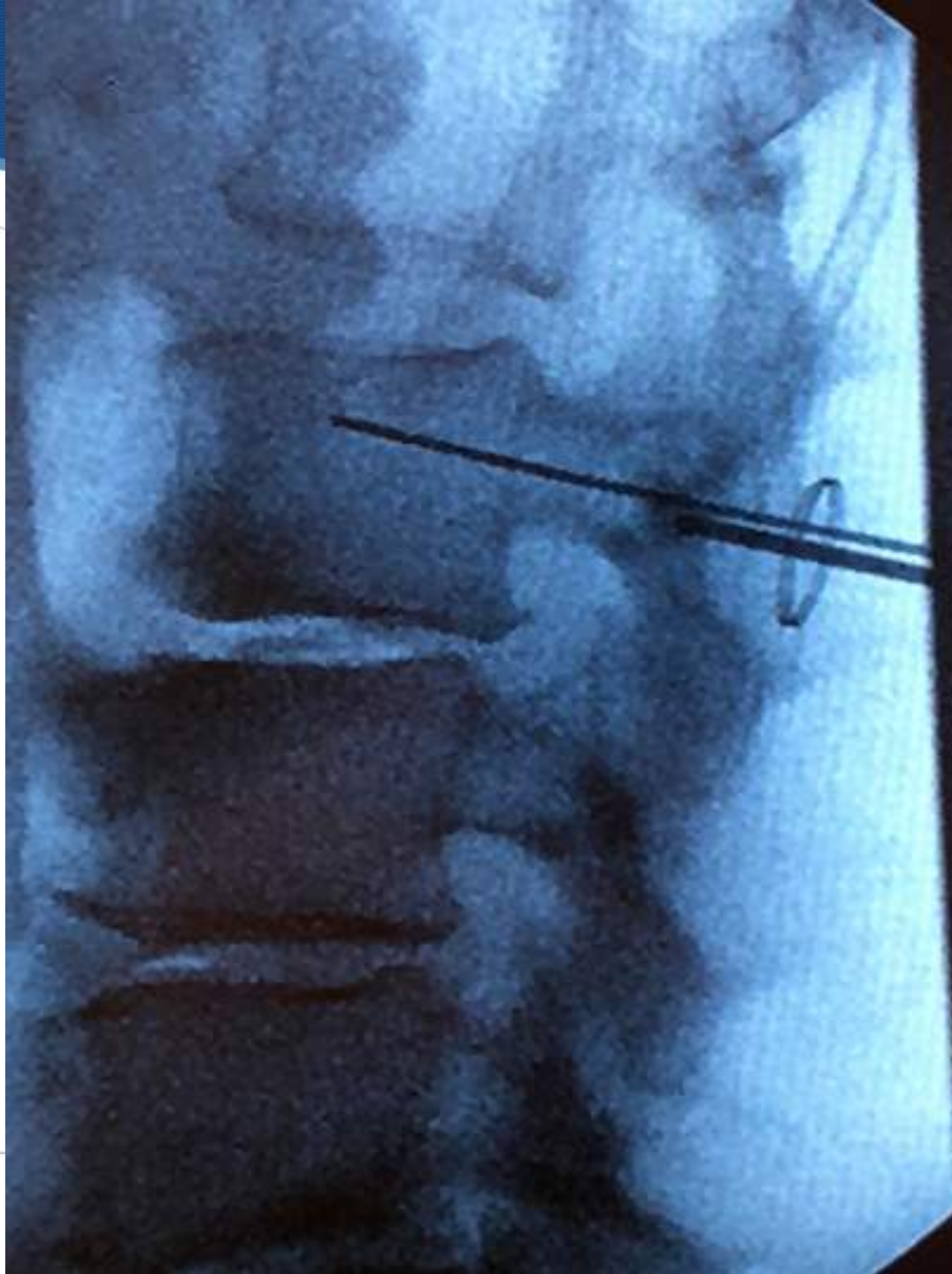
- 1. Small incisions < 25mm.
 - 2. Minimal blood loss and tissue injury
 - 3. Decompression + Instrumentation
-

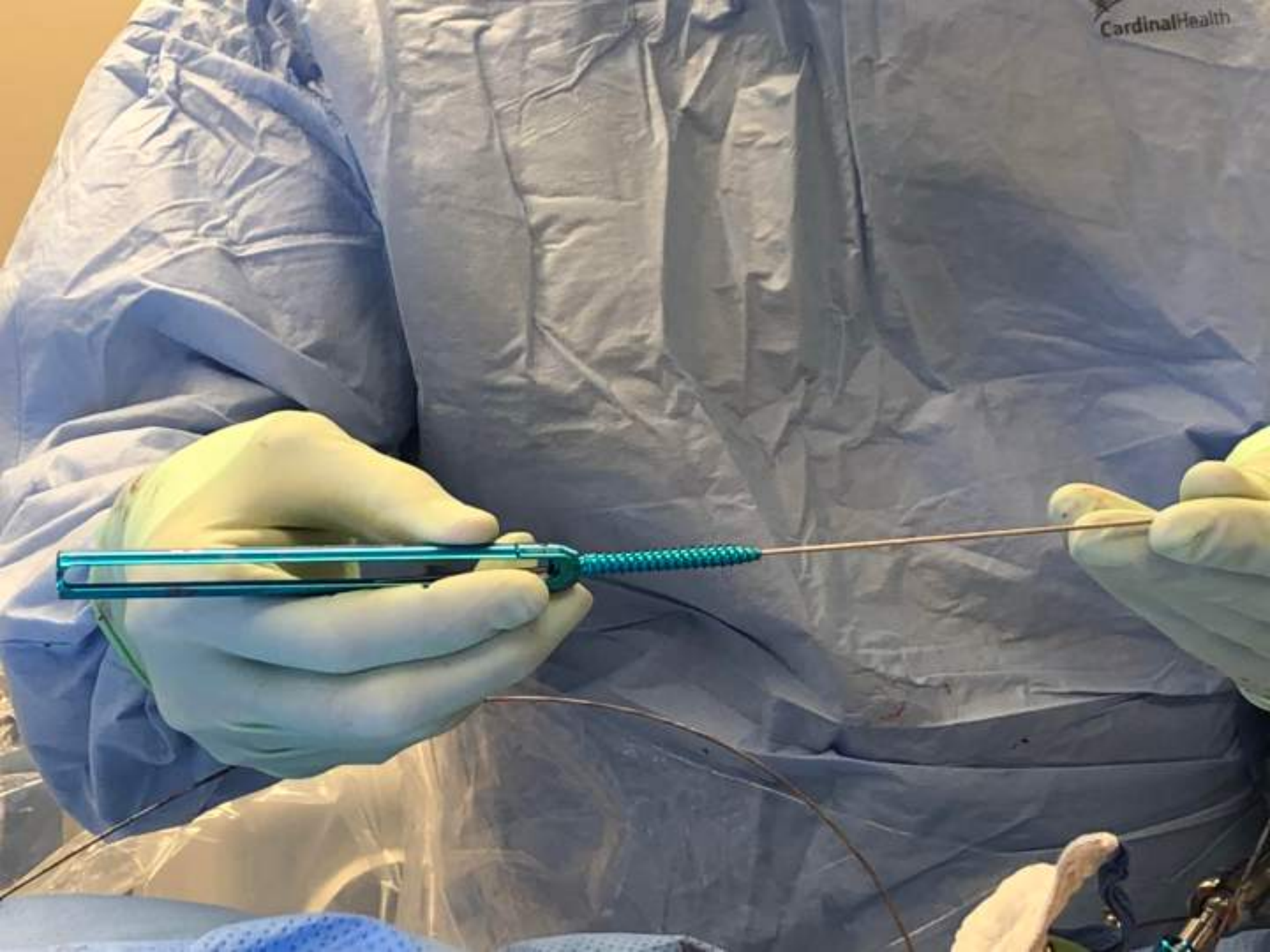




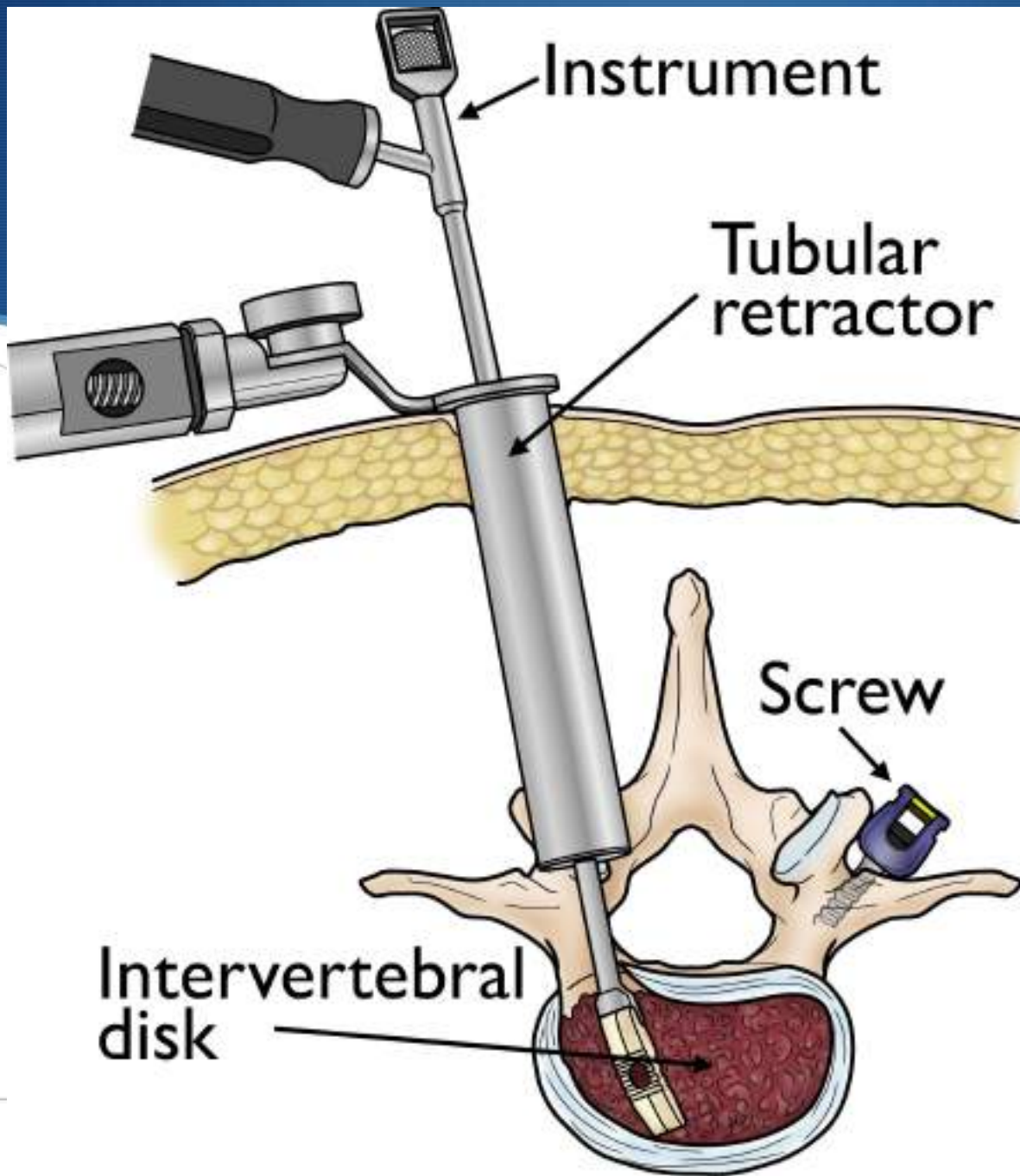




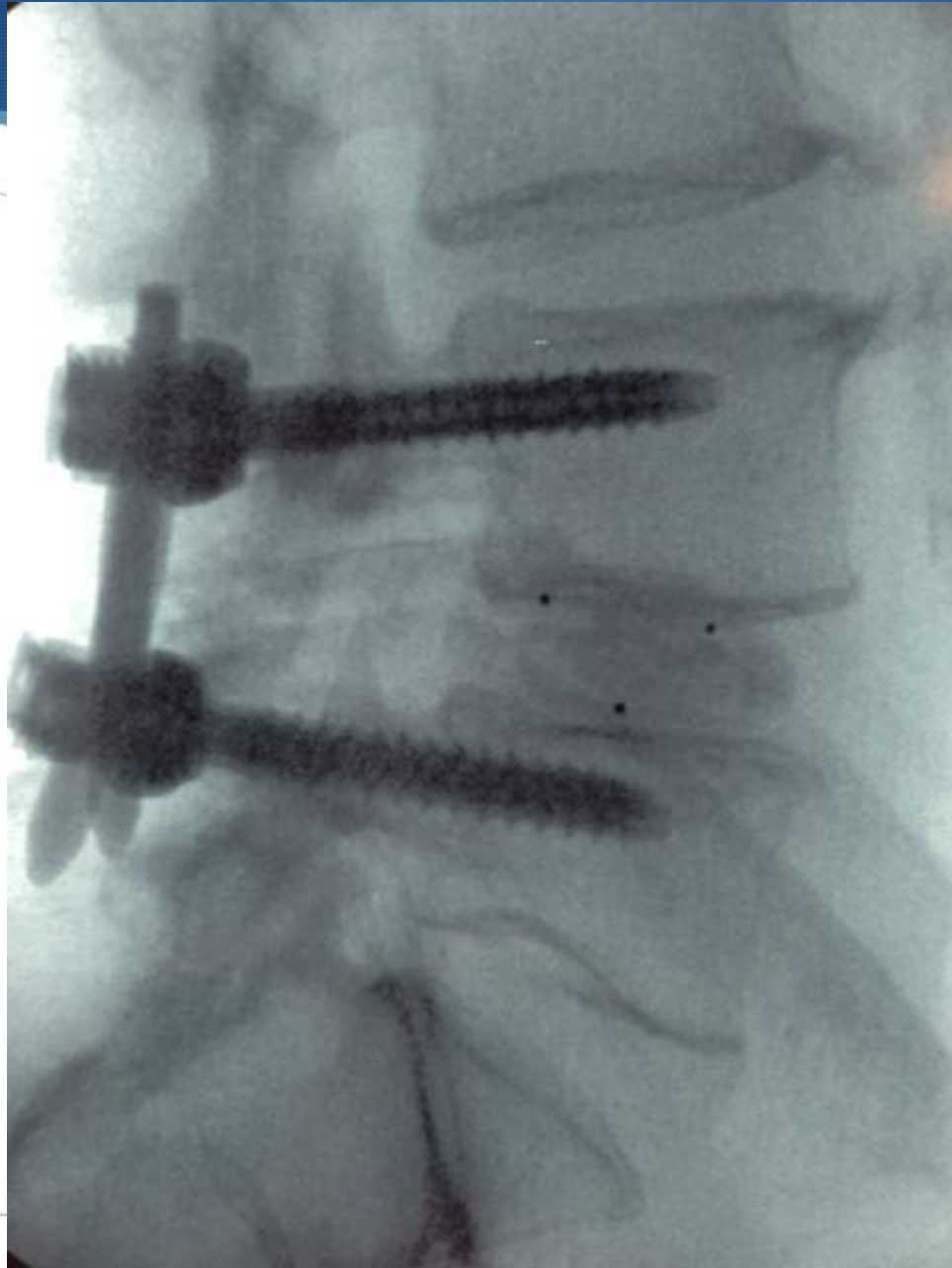


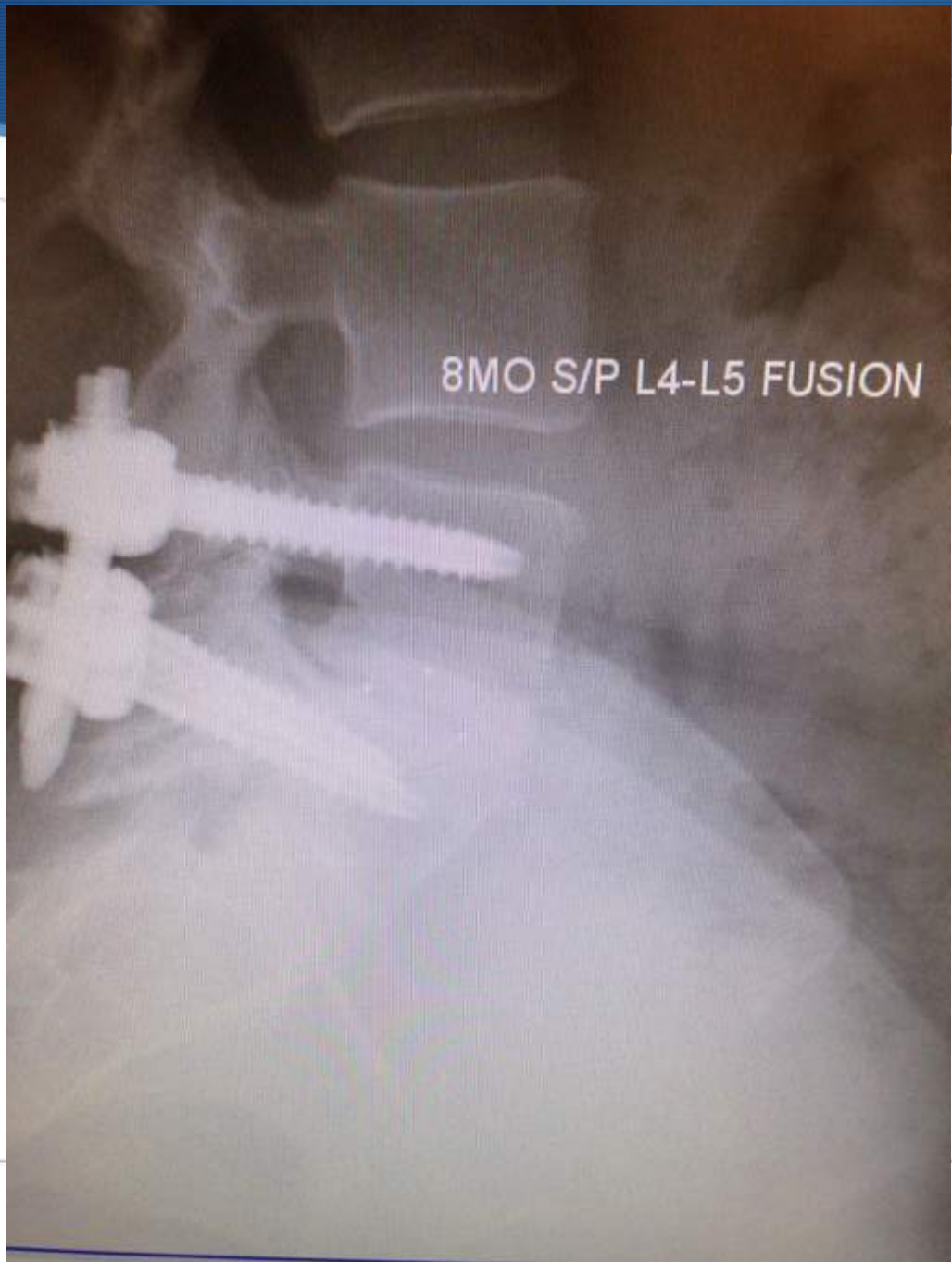














Summary

- ◆ 1. Tubular approach = MIS surgery
 - ◆ 2. Smaller incisions = less tissue disruption
 - ◆ 3. Rapid recovery = restoration to normal activity
 - ◆ 4. Outcomes of pain relief = or > to open surgery with decrease in complications.
-



THANK YOU!